

General Fishing Boundary

Fraser Isl.

RCA – No fishing

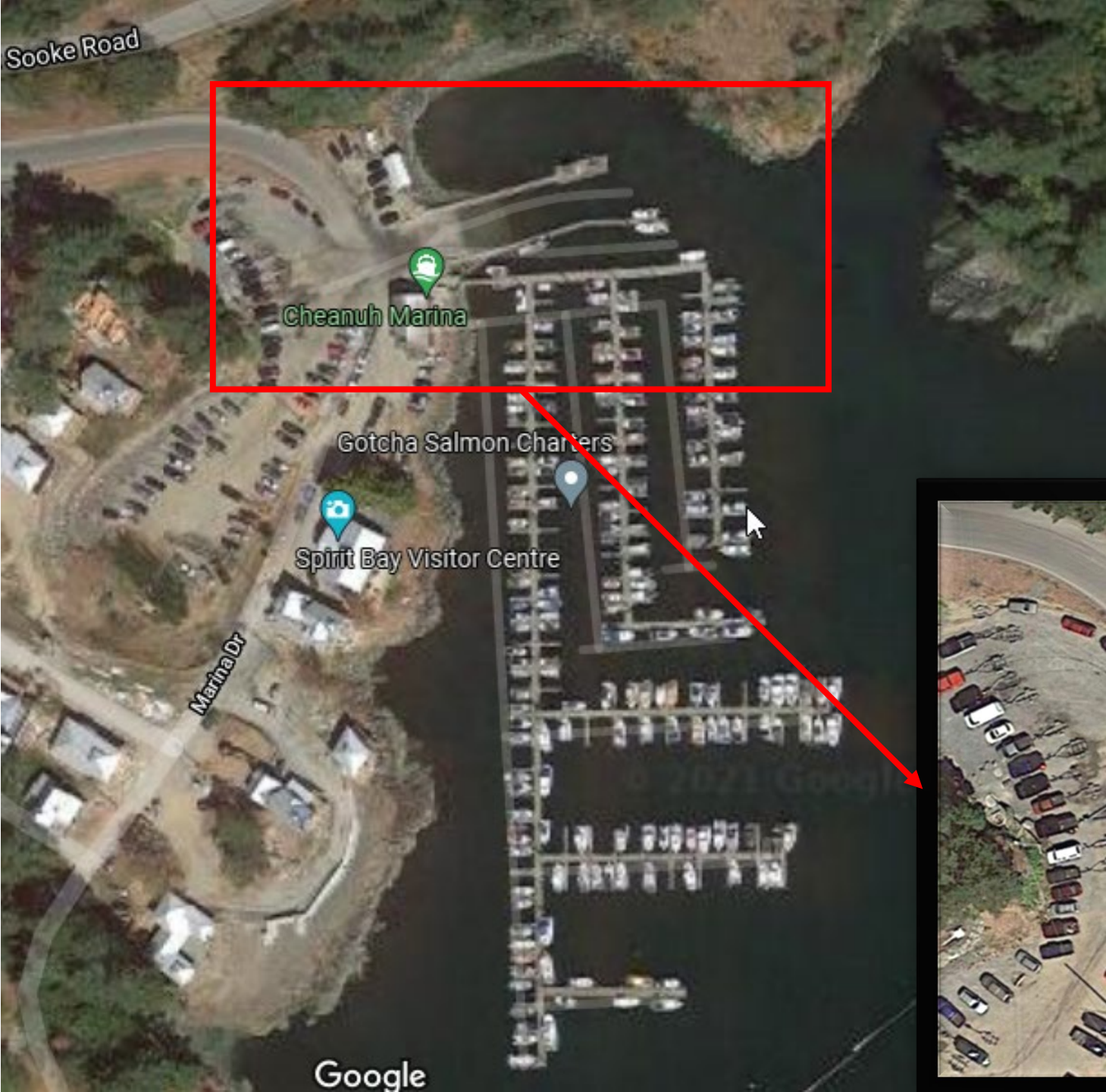
Creyke Point

Alldridge Point

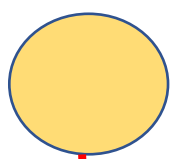
The general fishing area will be from the Marina to Beechey Head (4.5KM).

The offshore and Beechey head limit will be subject to weather information closer to the event date.

We will monitor VHF 68 for this event.



Staging area for unloading and prepping kayaks (behind Marina office)
Please do not tie up the launch unless ready to go.



Saturday night kayak tie up (mooring) area on South side of fuel dock

