



Pacific Playgrounds (Black Creek)

September 10-12th, 2021

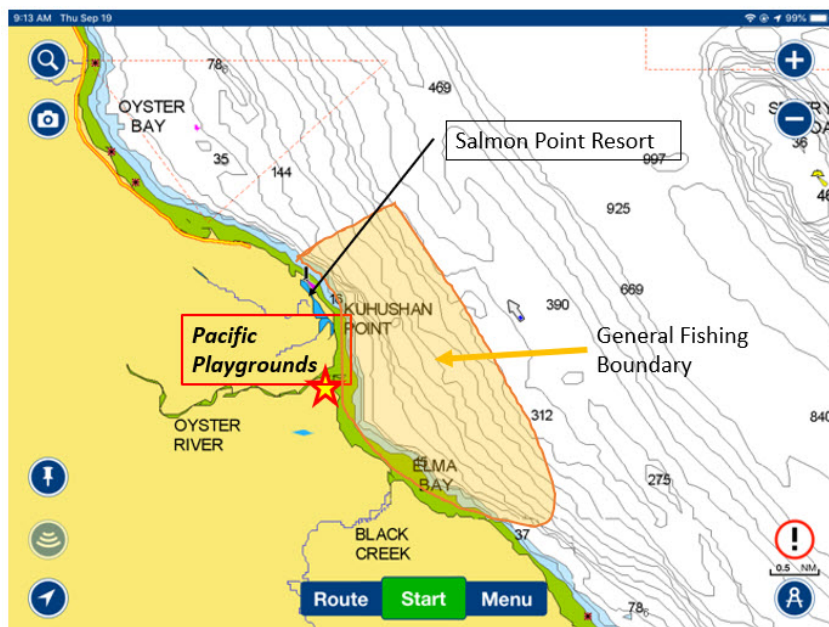
2021 WCKAS Finale

Tips, Tricks and Techniques: Provided by Brad Torry / Allison Bligh

Overview

We will have access to a large area for this event. Currently the forecasted weather is good however winds (which can be an issue) will be unknown until closer to the date and we will update everyone on check in.

All fishing will take place within 2.0 km of shore and may be reduced depending on wind and weather.



The general fishing area will be from Salmon Pt to the South End of Alma Bay. This will allow us to fish the Oyster and Black Creek Estuaries (where I marked fish last night)

The offshore limit will be weather dependent. At the moment winds are supposed to be up so near shore will be the plan.

If by chance we are blown off the water we have an alternate plan. See next slide / image

<https://pacificplaygrounds.ca/>

Fishing Regulations:

Area 14: <https://www.pac.dfo-mpo.gc.ca/fm-gp/rec/tidal-maree/a-s14-eng.html>

Area 13: <https://www.pac.dfo-mpo.gc.ca/fm-gp/rec/tidal-maree/a-s13-eng.html>

Freshwater:

http://www.env.gov.bc.ca/fw/fish/regulations/docs/1113/fishing-synopsis_2011-13_region1.pdf

Fishing: The waters surrounding Pacific Playgrounds offer a great variety of fishing opportunities for both novice and seasoned kayak anglers. There are plenty of kelp beds close to shore, and a very healthy population of



the

small to medium sized rockfish. This time of year sees both Chinook and Coho in area and depending on timing Pink Salmon should be present.

Pinks and Coho tend to be circling in schools testing for the taste of freshwater so are on the move and can be anywhere. These fish will generally push up towards the shore and river mouth on the flood tide and move into slightly deeper water on the ebb.

For those looking for a little more adventure in finding the big Chinook. Look for bait on your sounder and jig these areas. Generally we will find the Chinook in transit and there are two ledges, one around 85' and the other at 200'. The Chinook tend to run along these.

Gear:

With the variety of fish available at this time of year, bringing a multiple gear options is a great idea. Jigging lures work great for bottom fish and cod. If you're set up for trolling do it; spoons, hoochies and bait works well this area for salmon. If pinks are still around any lure with Pink will work. Make sure your gear is suited and capable of handling a 10+ lb salmon. I generally like 7'-8'6" MH rods that have ample line for the big runs. My personal preference for spin casters or level winds is braided line with mono leaders to provide some shock absorption.

Bottom line here (ask Shirley and Tammy) is you can land a fish on just about anything. Manage your drag and use your kayak to your advantage to land the big one.

Off-The Water:

The Oyster River Nature trails nearby offer a lovely walk along the waterfront to Salmon Point. There is a mini-golf course nearby as well if you're looking for some family fun. If you are a multi-disciplined angler, be sure to bring your fly rod along. The Oyster River is a fantastic freshwater system. You will find Pinks, Chum, Chinook and possibly Coho arriving at this time of year to the system. Please be sure to review the regulations thoroughly as this is a non-retention river.

Tips and Tricks:

Ideally you find the bait you find the fish. Having a fish finder out here is helpful. If you do not have one, I encourage you to fish with someone who does. Traditionally we want to fish the edges of the bait balls and depending whether trolling or jigging staying on the bait becomes more critical for the second technique.

If not fishing the primary spots, look for bait and look for small underwater structure where both bottom fish and bait fish will congregate.

Techniques (Salmon)

There are the same two traditional techniques, trolling and jigging. This time of year, we generally see fish from 50 – 200'. For those of us trolling I recommend fishing the 85-100' window as any deeper you create significant drag and more challenges to land the fish.



If fish are plentiful you can troll with strictly a spoon or plug without a flasher or dodger. If the bite is slow, adding a flasher or dodger can increase potential. As always with the kayak I suggest using smaller size flashers and dodgers to reduce the drag. Running anchovy or herring is always an option however the dogfish have shown up and you will be losing a lot of bait to them if this is your approach. Key lures for me



3.5" Big Eye Spoon Glow Sample Set

are the Lighthouse Big Eye spoons, King Kandy cut plug imitations and Gibbs Delta Skinny G's. The tack is generally North South along the 85' or 200' contour.

For trolling, those with downriggers can direct target given depths. For those without downriggers, diving devices (deep six etc) or use of banana or Peetz style (4-10oz) inline weights can be used to get your lines down.



For jigging, pretty straight forward. Find the bait or fish and away you go. I find most success by dropping to bottom and work my way up. A reminder that most fish hit on the drop so if you feel slack in your line reel down on it and set the hook once you feel some weight! A reminder that for Salmon everything must be barbless, and this includes your jigs.

Bottom Fish

This area is not as productive for bottom fish as some others but there are lots there. Any traditional jig off the bottom will work. Lighthouse Lures and Buzz bombs are some of my go to favorites as well as Point Thompson Jigs and Mac

When searching for bottom fish I generally find its not as important to jig vigorously but rather to set your lure off the bottom and wait for "hits" before starting the jig.



out
Deeps

Another method not widely used is using swim baits like the Lighthouse lure versions pictured here. These lures do not have to be jigged to the same degree and are particularly good slow trolled. I like to use these when transitioning between locations. Moving at a slow speed should attract the bite. Once onto fish it is often worth stopping and jigging with conventional jigs.

Netting

Do not forget, headfirst into the net. If you plan to release it, get your photo quickly and then get the fish back into the water.

Bottom Fish Release device

Reminder that if you are bottom fishing you need to carry a descending device on board to safely release fish that have their swim bladders affected.