



Event: Muchalat Lake (Gold River)

Date: May 14-16

Tips, Tricks & Techniques

Thanks to Darcy Curr for sharing his knowledge and experience with us.

Overview:

Muchalat Lake is a deep cold lake. The entire lake is fishable. The lake can be productive for all types of fishing. Trolling, spin casting and the fly are all productive here. The most popular area is the OKTWANCH River mouth. If you head towards the back end of the lake sockeye point can be very good, no sockeye in the lake now though! For a bit of a workout head to the back end where the Muchalat flows in, along with a number of smaller creeks. The bay at the back end can also be very productive.

Fish depths will depend on water temperatures. Having access to a downrigger or some form of line diver device or weights to change up your depths to locate fish. Using your finder to locate fish, bait fish and the thermocline (most sounders when operating on high frequency will recognize the density change at the thermocline).

See the maps below for details of the areas.

The screenshot shows the website interface for Muchalat Lake (Gold River). The header includes the British Columbia logo and navigation links. The main content area features a title, a list of site details, a large photo of the lake, and a list of site descriptions and directions. The footer contains a navigation menu.

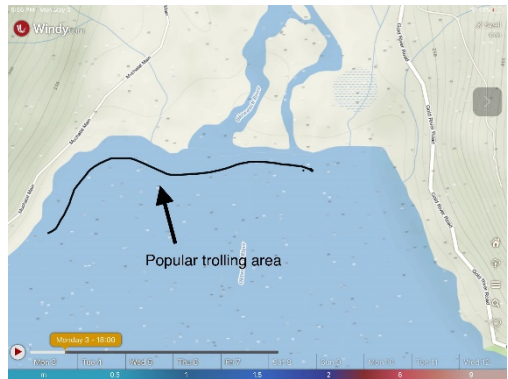
Rec Site #: REC0258
Type: Maintained
Fees: \$15.00 Camping
Fee Applies: May 14, 2021 - Sep 6, 2021
All Days
Campsites: 40
Access: Road
Facilities: Boat Launch
Tables
Toilets
Wharfs
Site Operator: K.G. BEAN VENTURES LTD.

- Site Description:** A large, treed site at the east end of Muchalat Lake. Site includes a boat ramp, dock, beach and swimming area; lots to see and do! Muchalat Lake will remain open for public use during the off-season.
- Driving Directions:** As you approach the Village of Gold River via Hwy 28, head straight through the junction (don't turn left into town). After crossing the river, you'll come to a T-junction. Turn right (head north) and follow the signs to Muchalat Lake Recreation Site. About 12 km from the T-junction (mostly gravel road); 20 minutes.
- Fire Bans and Restrictions:** [Link](#)

[View in Interactive Web Map](#)

Site Maps:
[Muchalat Lake Rec Site.pdf](#)

Home About.gov.bc.ca Disclaimer Privacy Accessibility Copyright Contact Us





Gear: (Same as Horne)

Trolling gear is not too critical, I prefer a rod with some backbone to it and a soft tip, but almost any rod in line weights 6 through 15 pounds will do. I spool the reel up with 20-30 pound braid and use a 12 pound fluorocarbon leader. I find it helpful to use the small Scotty downrigger clip as it holds the line a lot better than the large ones. For a downrigger a small scotty laketroller will do when paired with a 2 or 3 pound cannon ball. In the early season fish will tend to be in the top 40 feet of the water column.

For jigging you can use the same rod as trolling but you may lose some sensitivity and casting distance. I prefer ultralight rods, up to a 6-pound rating. I pair this with a smaller reel, 4000 size and under. A little extra rod length helps cast a lot further (7 foot is good), as well as making sure your reel is fully spooled. I use the thinnest braid I can find and usually run 4-6 pound fluorocarbon leader. You want your drag pressure set pretty light when going under 6 pound test to avoid break offs.

Darcy's Tackle Recommendations: I'm typically a troller, I use a gang-troll usually bright silver along with a plug usually locally made wee-tad or a locally made wedding band style lure in black or red. I also drag a fly as well; usually a leech type pattern although it might be a bit early for the Big flies. A wide variety of spinning spoons, mepps, blue fox etc can produce in the creek Mouths. Worms are a standard used bait as well and we will have some available for sale 😊.

Darcy's Practice Round – Look out he's going to be dangerous



